



HYDE
COMMERCIAL

FOR LEASE

2929 W. MAIN ST, VISALIA



CONTACT BROKER

BRIAN HYDE / MATT GRAHAM

Lic # 01243288 Lic # 01243288

559.739.9900 o - 559.739.9902 f

brian@hydecommercialre.com

matt@hydecommercialre.com

Hyde Commercial Real Estate

3330 West Mineral King Ave., Ste. F

Visalia, California 93291

www.hydecommercialre.com

PROPERTY DETAILS

Rental Rate.....\$ 1.35 / Sq. Ft.

Lease Type.....Gross

Square Feet.....868± - 7,000± Sq. Ft.

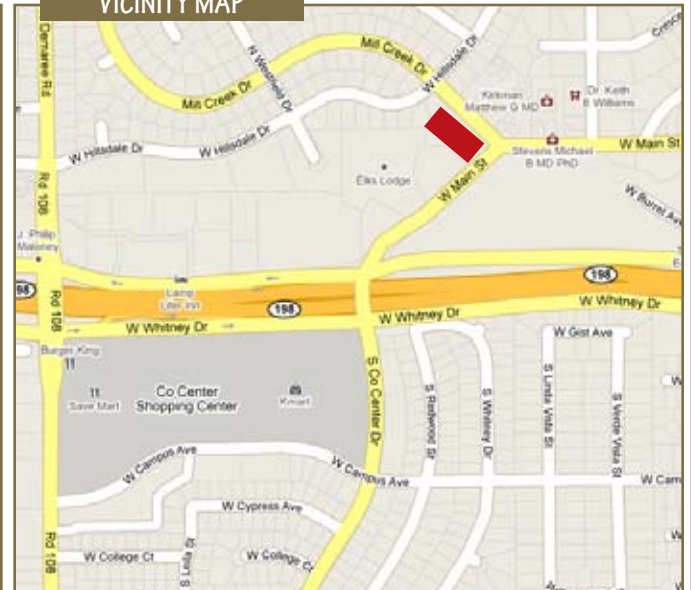
Zoning.....Prof Admin Office (P-A)

Additional Comments: Premises consists of 4 suites available (Suite A: 3,000+/- sq. ft., Suite B: 1,886+/- sq. ft., Suite C: 1,244+/- sq. ft., Suite D: 868+/- sq. ft. Please see attached floor plans for detailed space. Located on N.W.C. of Main St. and Mill Creek close to Tulare County Court House. Ideal office for an attorney, CPA, insurance agent, etc. Individual suites can be combined or demised. Tenant improvements possible.

AERIAL VIEW



VICINITY MAP



Please Note: All information and representation made herein, while not guaranteed, have been secured from sources we believe to be reliable, however, they are not warranted by Hyde Commercial and are subject to change without notice.



HYDE
COMMERCIAL

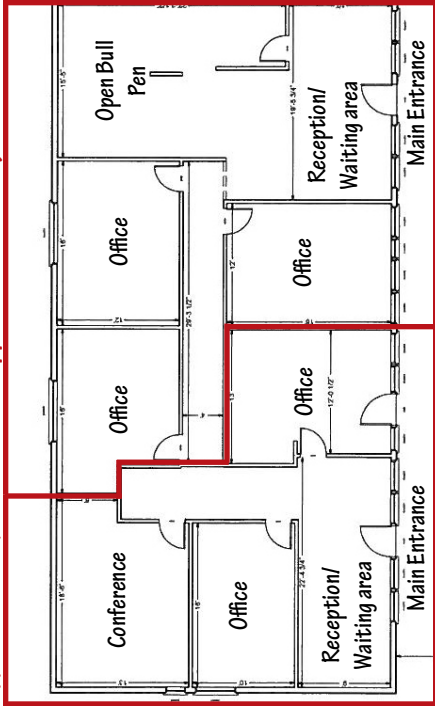
FOR LEASE

2929 W. MAIN ST, VISALIA

FLOOR PLANS

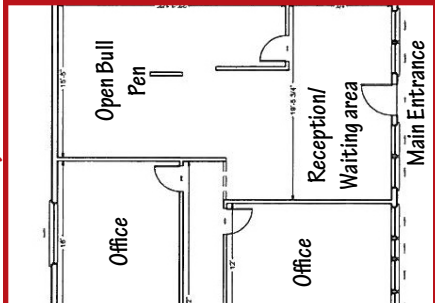
SUITE D

approx. 868 +/- sq. ft.



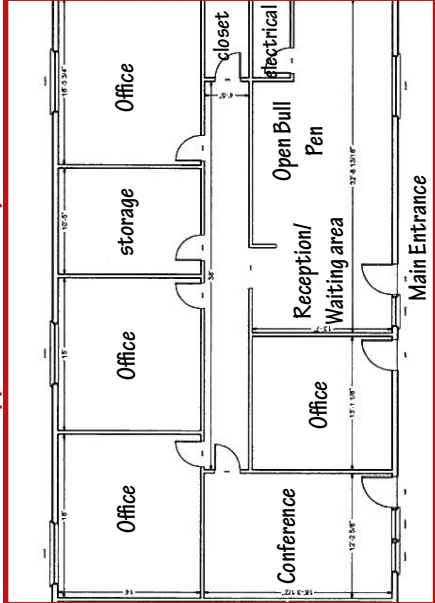
SUITE C

approx. 1,244 +/- sq. ft.



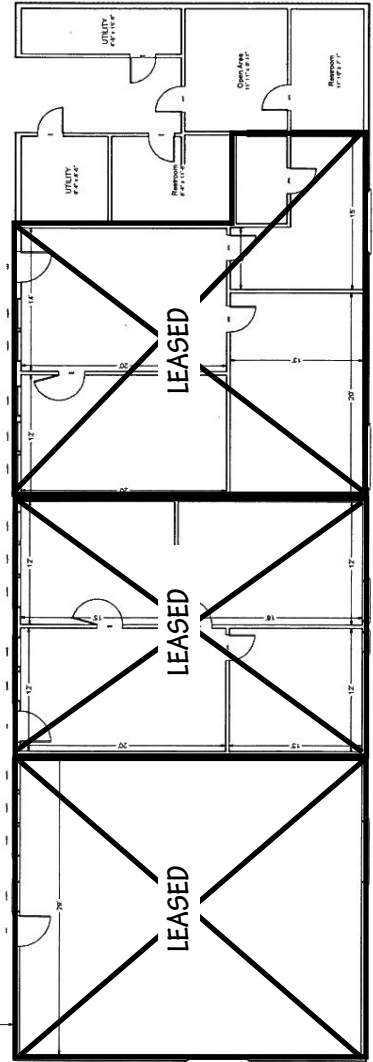
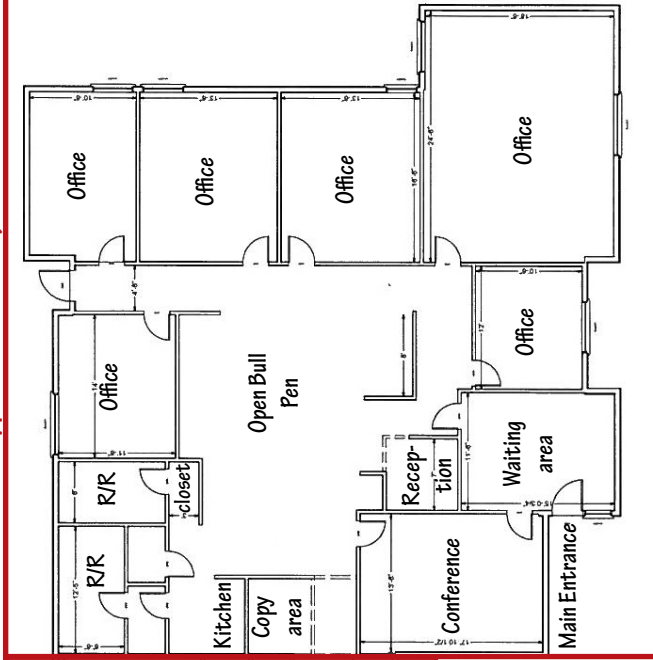
SUITE B

approx. 1,886 +/- sq. ft.



SUITE A

approx. 3,000 +/- sq. ft.



common area
restroom

