



FOR LEASE

2929 W. MAIN ST, SUITE A, VISALIA

CONTACT BROKER

BRIAN G. HYDE

Lic # 01243288

559.739.9900

559.739.9902 Fax

brian@hydecommercialre.com
3330 W. Mineral King Ave., Suite F
Visalia, California 93291

www.hydecommercialre.com

PROPERTY FEATURES

RENTAL RATE:

\$1.35 per Sq. Ft. ADDITIONAL COMMENTS:

LEASE TYPE:

Premises consists of 6 offices, waiting room, conference room, storage space, bull pen area, and private men and women's restroom. Located on N.W.C. of Main St. and Mill Creek close to Tulare County Court House. Ideal office for an attorney, CPA, or insurance company, etc. Space can be combined with Suite B which consist of 1,886 sq. ft.

SQUARE FEET:

3,000+/- sq. ft.

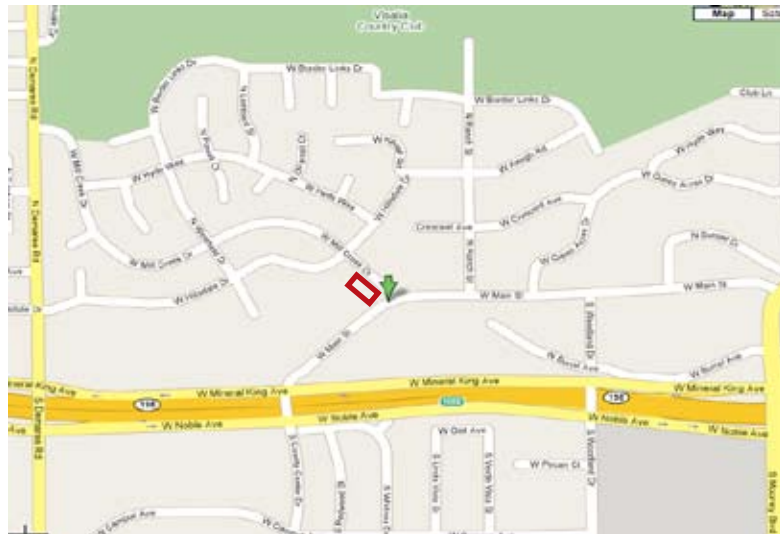
ZONING:

Professional Administrative Office (PA)



PROPERTY PHOTOS

AERIAL VIEW



VICINITY MAP

Please Note: All information and representation made herein, while not guaranteed, have been secured from sources we believe to be reliable, however, they are not warranted by Hyde Commercial and are subject to change without notice.

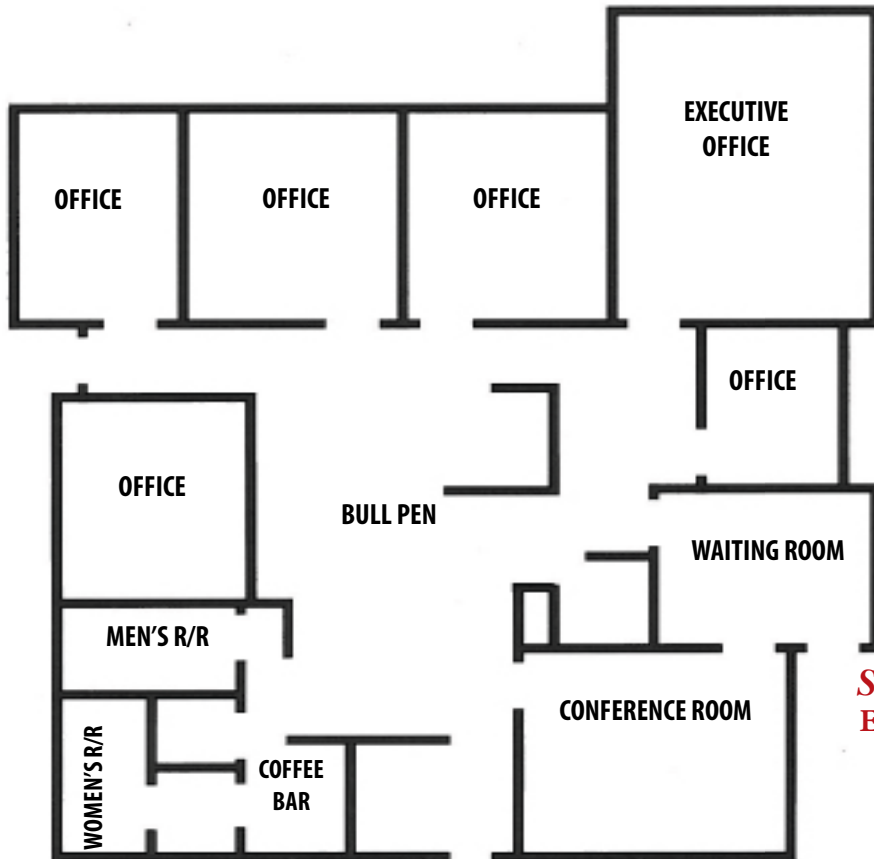


HYDE
COMMERCIAL

FLOOR PLAN

MAIN STREET

MILL CREEK



SUITE "A"
Entrance