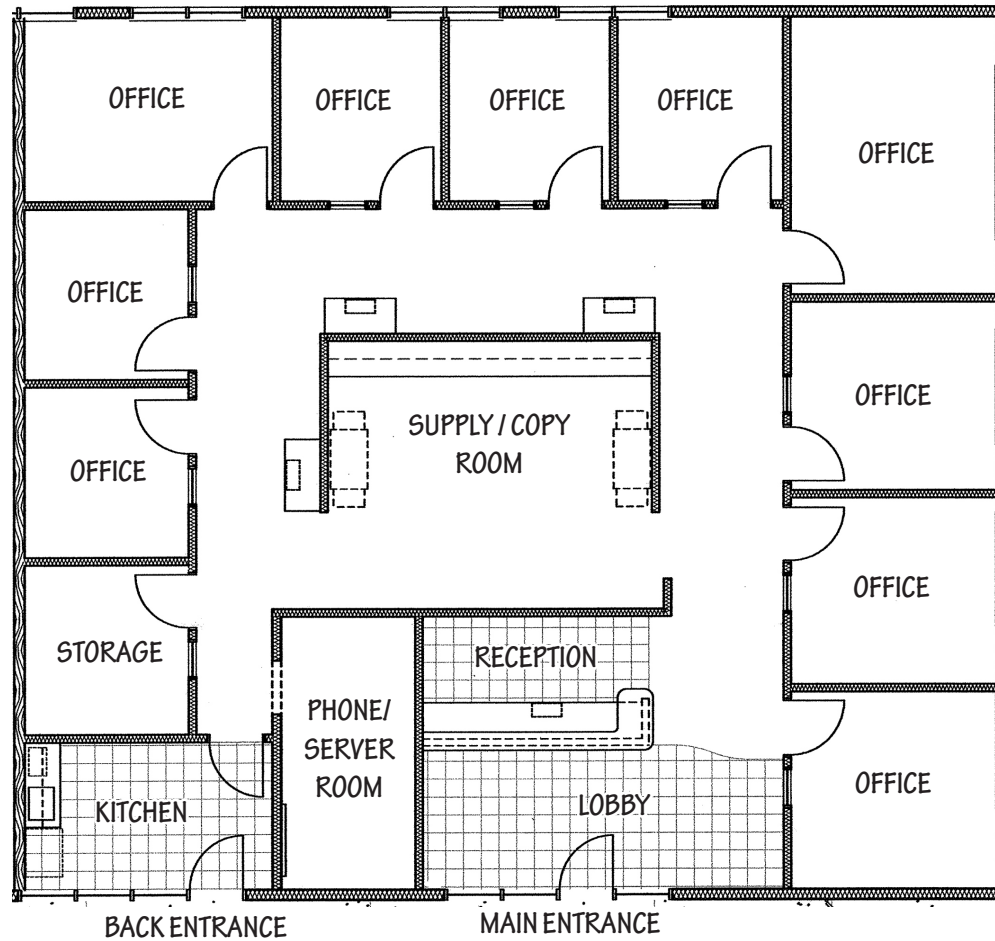


# FOR LEASE

## 3530 W Mineral King Ave | Suite E | Visalia, CA



CONTACT: **Brian Hyde** - 559.739.9900



### FLOOR PLAN

Please Note: All information and representation made herein, while not guaranteed, have been secured from sources we believe to be reliable, however, they are not warranted by Hyde Commercial and are subject to change without notice.