



FOR LEASE

440 N. GIDDINGS ST, VISALIA

PROPERTY INFORMATION

Rental Rate: \$1.35

Lease Type: Gross

Square Feet: 1,400 Sq. Ft.

Zoning: Quasi-Public (Q-P)

Additional Comments: Premises is located within the brand new Rawhide baseball park. Consists of an open floor plan with an allowance for tenant improvements. Private restroom and private entrance. Call for more details.

CONTACT BROKER

Brian Hyde **Matt Graham**

Lic # 01243288 Lic # 01804235

559.739.9900 office / 559.739.9902 fax

brian@hydecommercialre.com

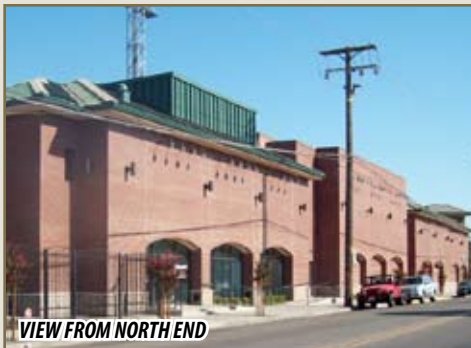
matt@hydecommercialre.com

www.hydecommercialre.com

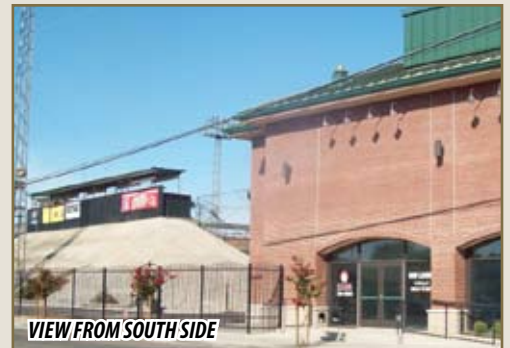
Hyde Commercial Real Estate

3330 W. Mineral King Avenue, Suite F

Visalia, California 93291



VIEW FROM NORTH END



VIEW FROM SOUTH SIDE

VICINITY MAP



AERIAL VIEW



Please Note: All information and representation made herein, while not guaranteed, have been secured from sources we believe to be reliable, however, they are not warranted by Hyde Commercial and are subject to change without notice.