



FOR SALE

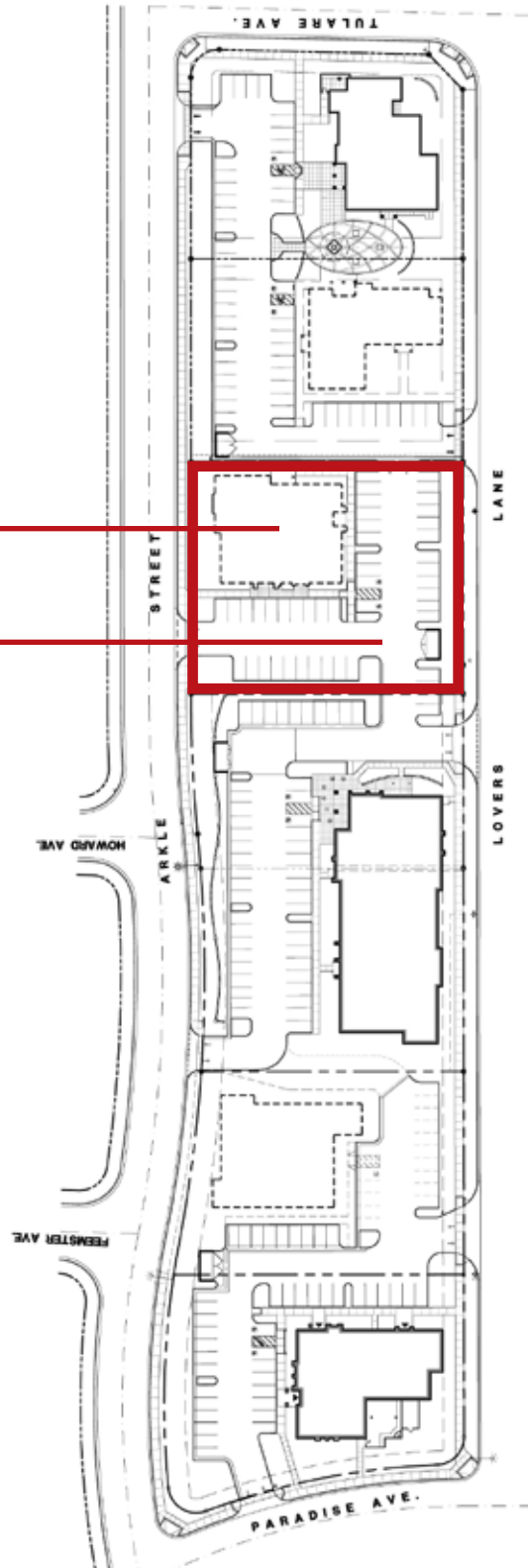
1321 S. LOVERS LANE, VISALIA

LOVERS LANE OFFICE COMPLEX

FUTURE OFFICE BUILDING

6,515 Sq. Ft.

44 AVAILABLE STALLS



WALL LEGEND

EXTERIOR 2-4" OF STUCCO & 1/2" O.C. 1/2" GYP. CEILING PLASTER W/ METAL LATH & APPROVED WEATHER BARRIER OR GRADE D OR CGAL. DEL. LAYER OF BARRIER WHERE FLAGGED ON SOLID HOOD SHEATHING.

PARTY HALL 2" WALLS BACK TO BACK CONSISTING OF (50% TABLE 7B, ITEM (7)-(5)) 2-4" OF HD STUCCO # 1/2" O.C. 5/8" TYPE X GYP. BD. BOTH SIDES. HORIZ. OR VERT. APPLICATION W/ 60 COOLER OR HALL BD. NAILS @ 7" O.C. PLACE END JTS. ON NAILING MEMBERS, STAGGER JTS. EA. SIDE. -AND- 3/4" DESIGN (48) 4" 20 GA. METAL C-11 STUCCO # 24" O.C. W/ 5/8" TYPE X GYP. BD. ONE SIDE & 1" THK. GYP. LINER PANELS ON OT. SIDE.

INTERIOR 1/2" G.C. TABLE 7B, ITEM (7)-(5) 2-4" OF HD. STUCCO & 1/2" O.C. 5/8" TYPE X GYP. BD. BOTH SIDES. HORIZ. OR VERT. APPLICATION W/ 60 COOLER OR HALL BD. NAILS @ 7" O.C. PLACE END JTS. ON NAILING MEMBERS, STAGGER JTS. EA. SIDE.

SAME AS EXTERIOR HALL BUT WITH 5/8" TYPE X GYP. AT INTERIOR 1/2" G.C. TABLE 7B, ITEM (7)-(5) INSULATE W/ X-R ISOCYANURATE BATT.

NOTES LEGEND

- C.G. SEWER CLEAN-OUT, SET AT GRADE IN APPROVED YARD BOX WITH COVER PER CPG SEC. 1010
- G.M. GAS METER BY S.C.G. CO.
- SAN. SANITARY SEWER PIPING, STD. WT. COATED CAST IRON UNDER BLDG. OUTSIDE BLDG. - PVC (ASTM D2004) OR PVC-DWR (ASTM D2688). SLOPE 1/8" PER FOOT, MINIMUM.
- F.E. FIRE EXTINGUISHER, 2A-10BC
- F.S. FIRE SPRINKLER
- K.B. KNOX BOX MASTER KEY LOCKER

