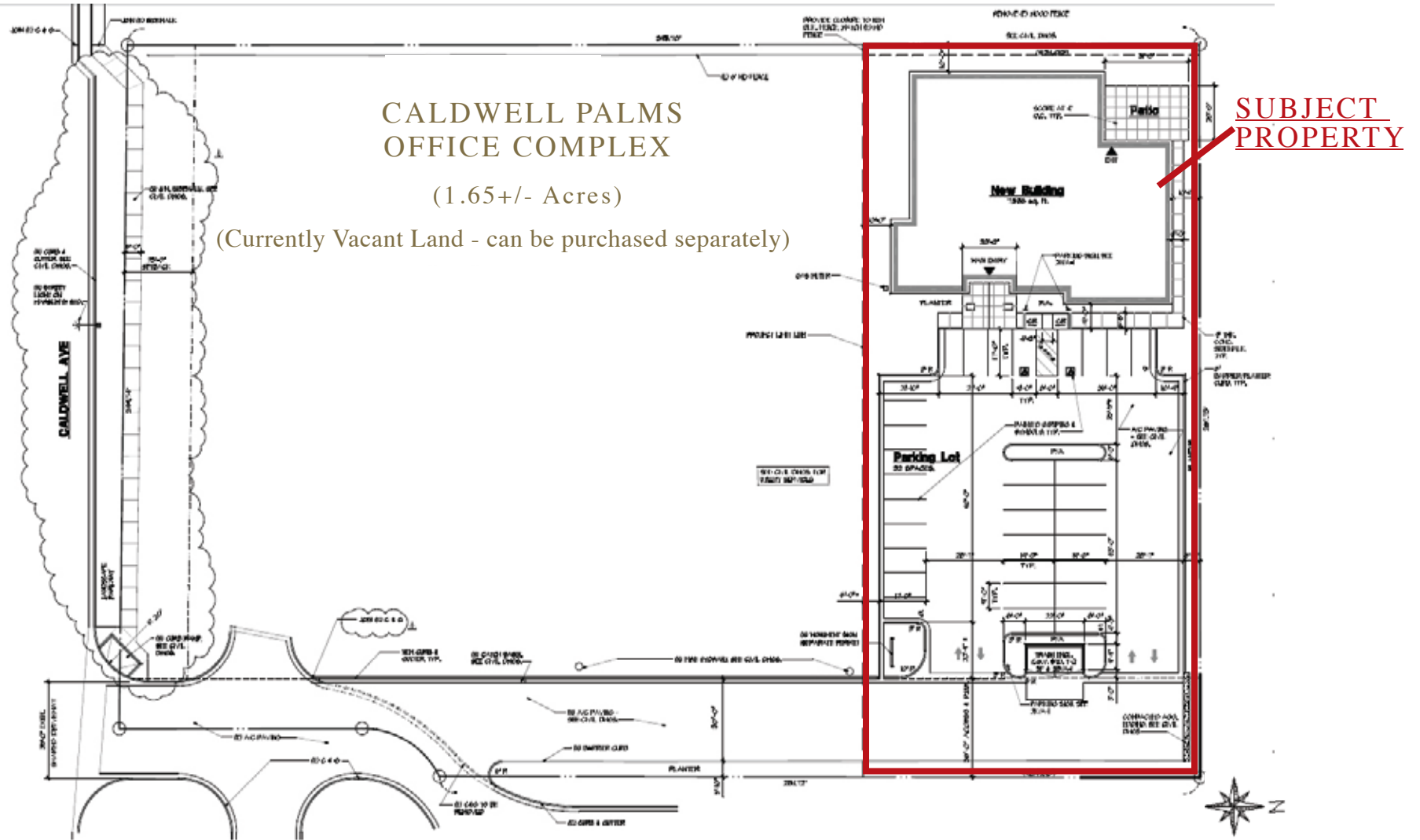


SITE PLAN - CALDWELL PALMS OFFICE COMPLEX



CALDWELL PALMS OFFICE COMPLEX

(1.65 +/- Acres)

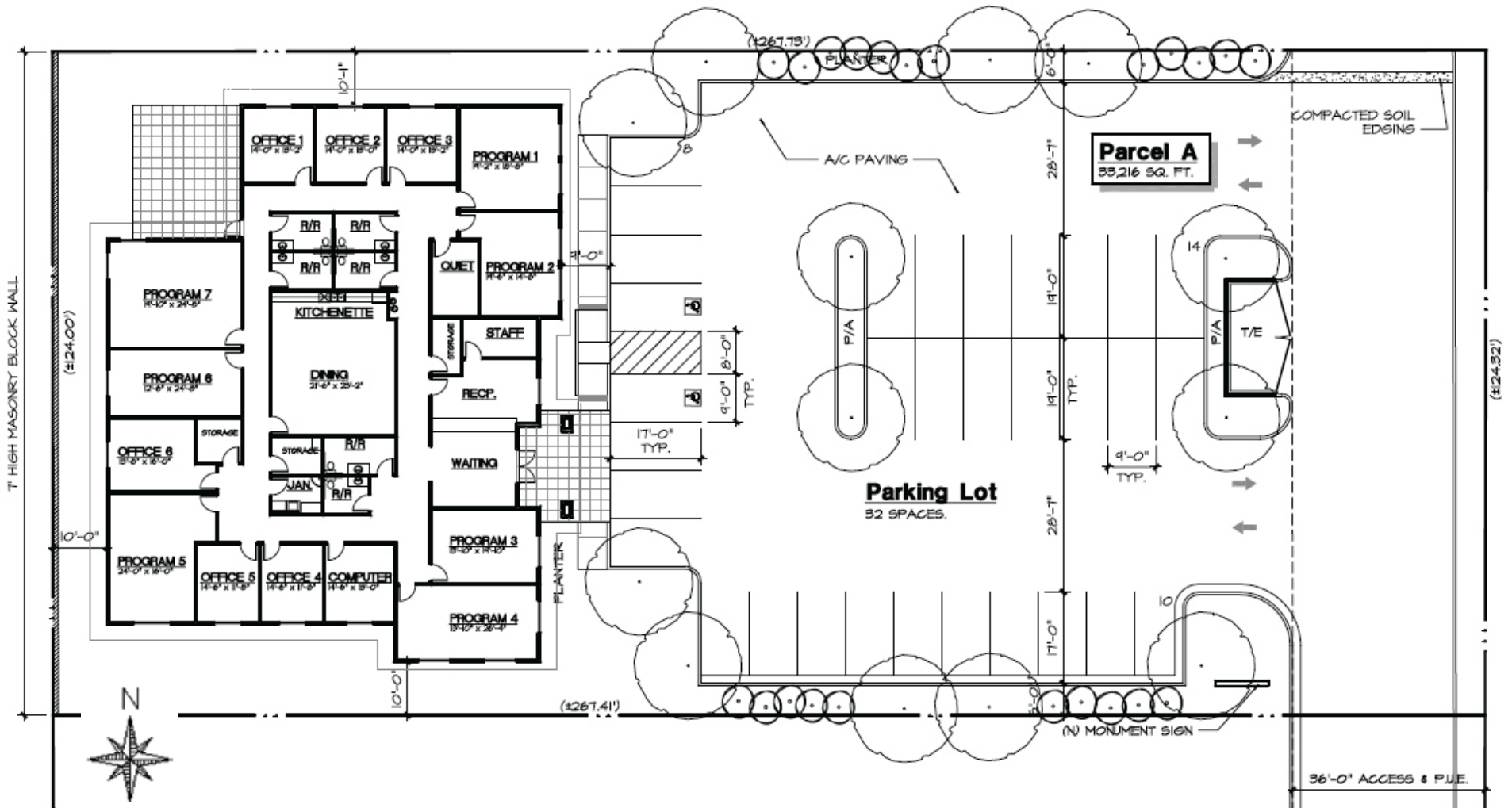
(Currently Vacant Land - can be purchased separately)

SUBJECT PROPERTY

3140 WEST CALDWELL AVENUE
VISALIA, CA

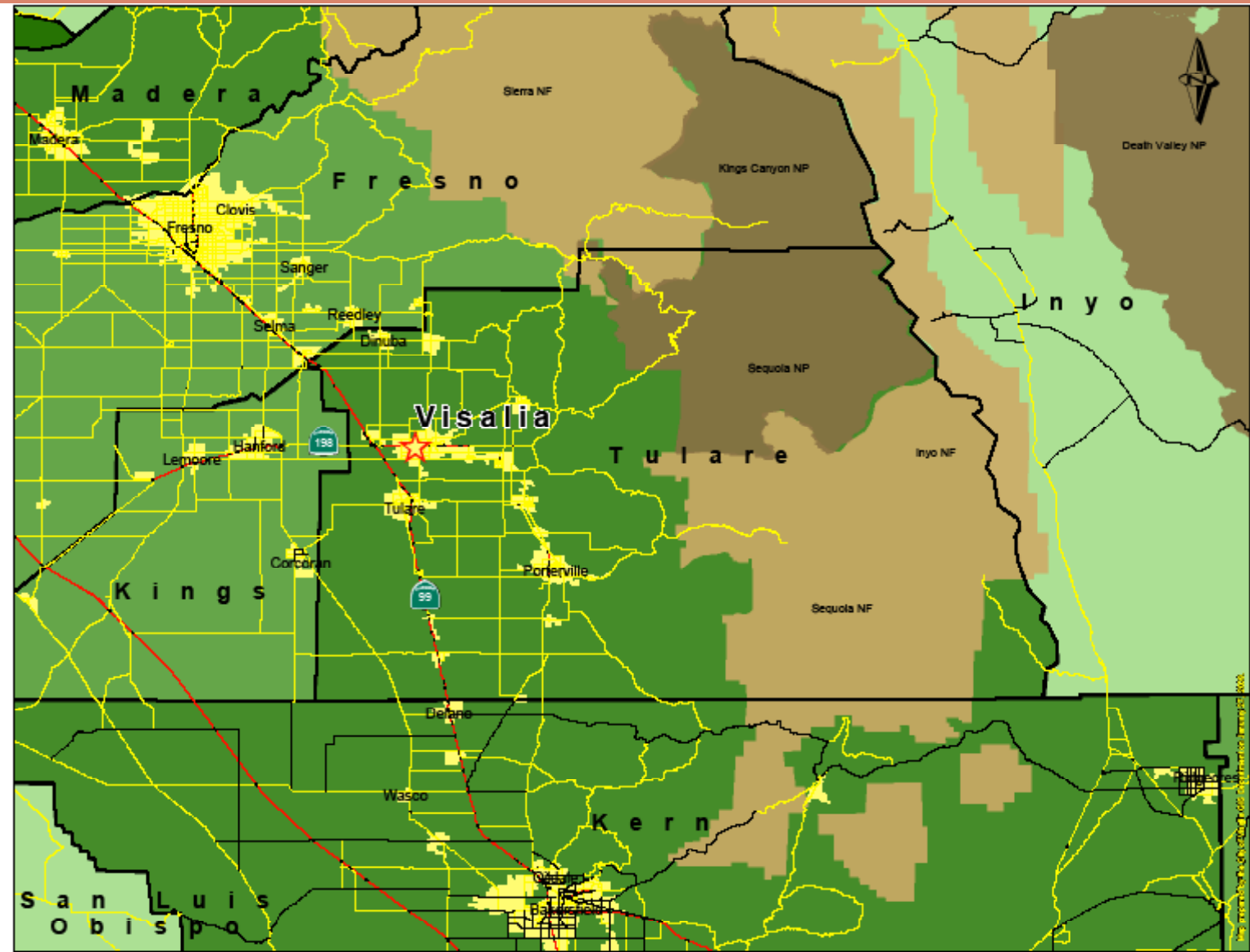


SITE PLAN - SOCIAL VOCATIONAL SERVICES, INC.



3140 WEST CALDWELL AVENUE
VISALIA, CA





LOCATION MAP

